

General information

For information on safety instructions, cleaning, technical information or connecting to a switchboard, please refer to the 'General Information' section in the full user guide at www.bt.com/producthelp

Guarantee

Your BT Freestyle 350 is guaranteed for a period of 12 months from the date of purchase.

Subject to the terms listed below, the guarantee will provide for the repair of, or at BT's or its agent's discretion the option to replace the BT Freestyle 350, or any component thereof, (other than batteries), which is identified as faulty or below standard, or as a result of inferior workmanship or materials. Products over 28 days old from the date of purchase may be replaced with a refurbished or repaired product.

The conditions of this guarantee are:

- The guarantee shall only apply to defects that occur within the 12 month guarantee period.
- Proof of purchase is required.
- The equipment is returned to BT or its agent as instructed.

This guarantee does not cover any faults or defects caused by accidents, misuse, fair wear and tear, neglect, tampering with the equipment, or any attempt at adjustment or repair other than through approved agents.

This guarantee does not affect your statutory rights.

For further information within and outside the 12 month guarantee, please refer to the full user guide at www.bt.com/producthelp

Product disposal instructions

The symbol shown here and on the product means that the product is classed as Electrical or Electronic Equipment and should not be disposed with other household or commercial waste at the end of its working life.

The Waste of Electrical and Electronic Equipment (WEEE) Directive (2002/96/EC) has been put in place to recycle products using best available recovery and recycling techniques to minimise the impact on the environment, treat any hazardous substances and avoid the increasing landfill.

Product disposal instructions for residential users

When you have no further use for it, please remove any batteries and dispose of them and the product as per your local authority's recycling processes. For more information please contact your local authority or the retailer where the product was purchased.

Product disposal instructions for business users

Business users should contact their suppliers and check the terms and conditions of the purchase contract and ensure that this product is not mixed with other commercial waste for disposal.

Warning

This equipment is not designed for making emergency telephone calls when the power fails. Alternative arrangements should be made for access to emergency services.

R&TTE Directive & Declaration of Conformity

This product is intended for use within the UK for connection to the public telephone network and compatible switchboards.

This equipment complies with the essential requirements for the Radio Equipment and Telecommunications Terminal Equipment Directive (1999/5/EC).

For a copy of the Declaration of Conformity please refer to www.bt.com/producthelp



Offices worldwide

The services described in this publication are subject to availability and may be modified from time to time. Services and equipment are supplied subject to British Telecommunications plc's respective standard conditions of contract. Nothing in this publication forms any part of a contract.

© British Telecommunications plc 2008.
Registered Office: 81 Newgate Street, London EC1A 7AJ.
Registered in England No. 18000000.

Designed and produced by The Art & Design Partnership Ltd.

Printed in China / Issue 2 / ADP11-08

BT & *British Gas*

Working together, supporting energy saving products

BT & British Gas have joined forces to help our customers find new ways to save energy around the home, so we can all do our bit for the environment & save money too!

BT is a sustainability leader

To find out how we're making our products greener visit

bt.com/betterworld/products



BT Freestyle 350 User Guide



Bringing it all together

- 1 Plug in
- 2 Charge
- 3 Go!

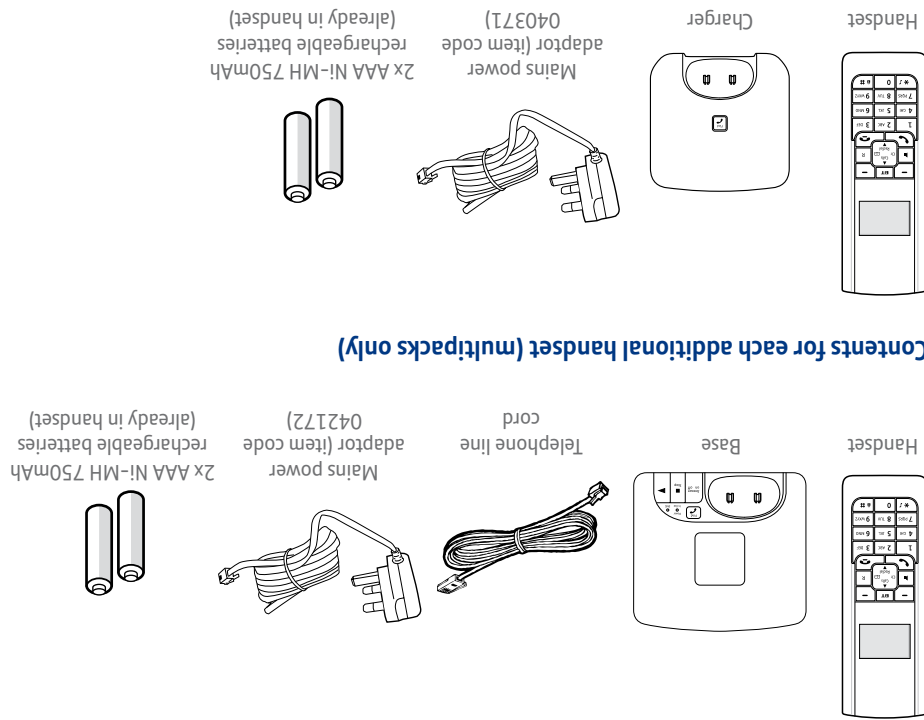


Setting up is easy. Just follow the simple steps in this guide.

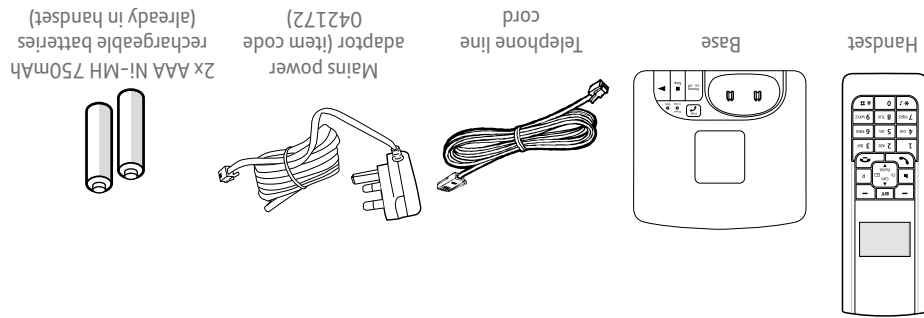
If you need further assistance, please visit our website www.bt.com/producthelp to view our advanced user guide or call our helpdesk on **0800 218 2182***

* Calls made from within the UK mainland network are free. Mobile and International call costs may vary.

Check box contents

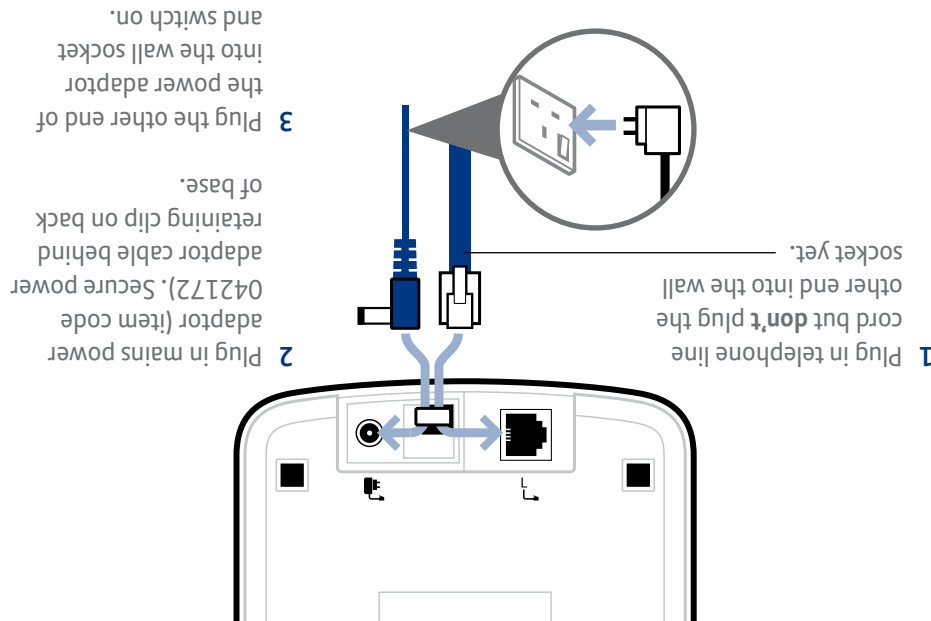


Contents for each additional handset (multi packs only)



Important: Only use the cables and rechargeable batteries supplied in this box, or this product may not work. Any replacement rechargeable batteries must be of the same type.

1 Plug in



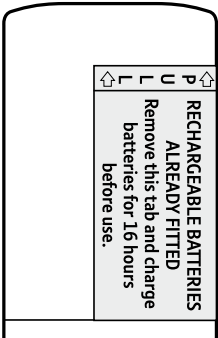
2 Charge

- 1 Activate batteries by pulling the plastic tab away from the back of the handset.
- 2 Place handset on base to charge.
- 3 After 16 hours, plug the telephone line cord into the telephone wall socket.

Set up your additional handsets (multi packs only)

Important: Charge the handset batteries for 16 hours or your phone may not work.

16hrs



- 1 For each additional handset and charger: plug the mains power adaptor (item code 040371) into the socket on the underside of the charger and plug the other end into the mains wall socket and switch the power on.
- 2 Activate batteries as shown above.
- 3 Place handset on the charger to charge for 16 hours.

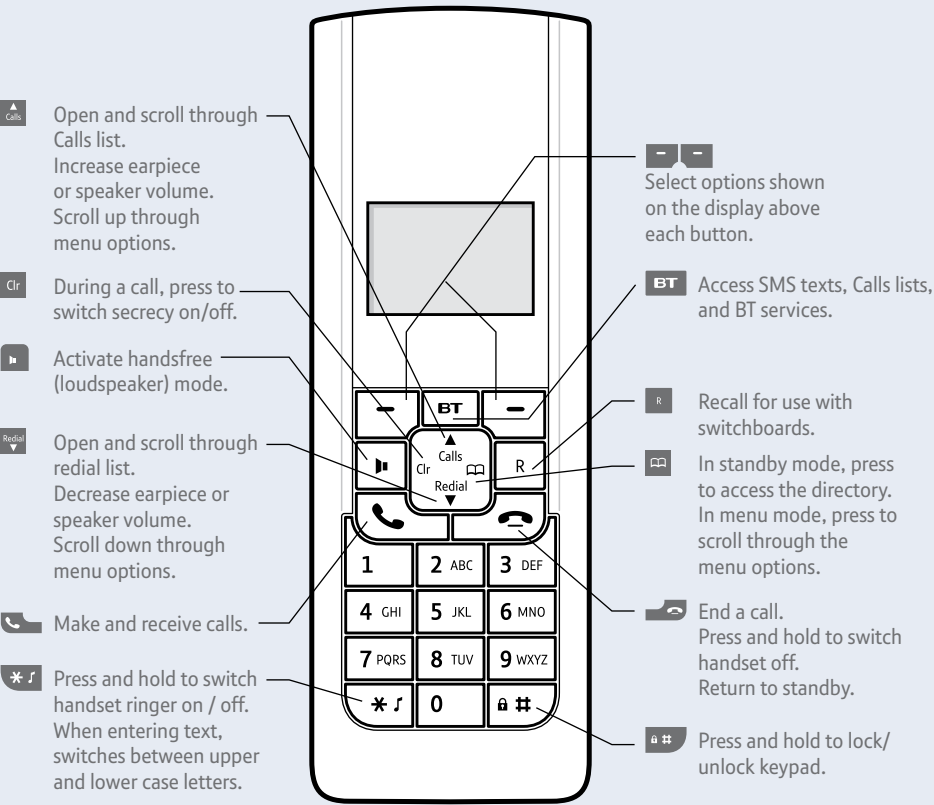
Important: If you ever need to remove the batteries, simply slide open the battery compartment cover and insert your finger nail under the end of the batteries to pull them out.

Your BT Freestyle 350 is now ready for use.

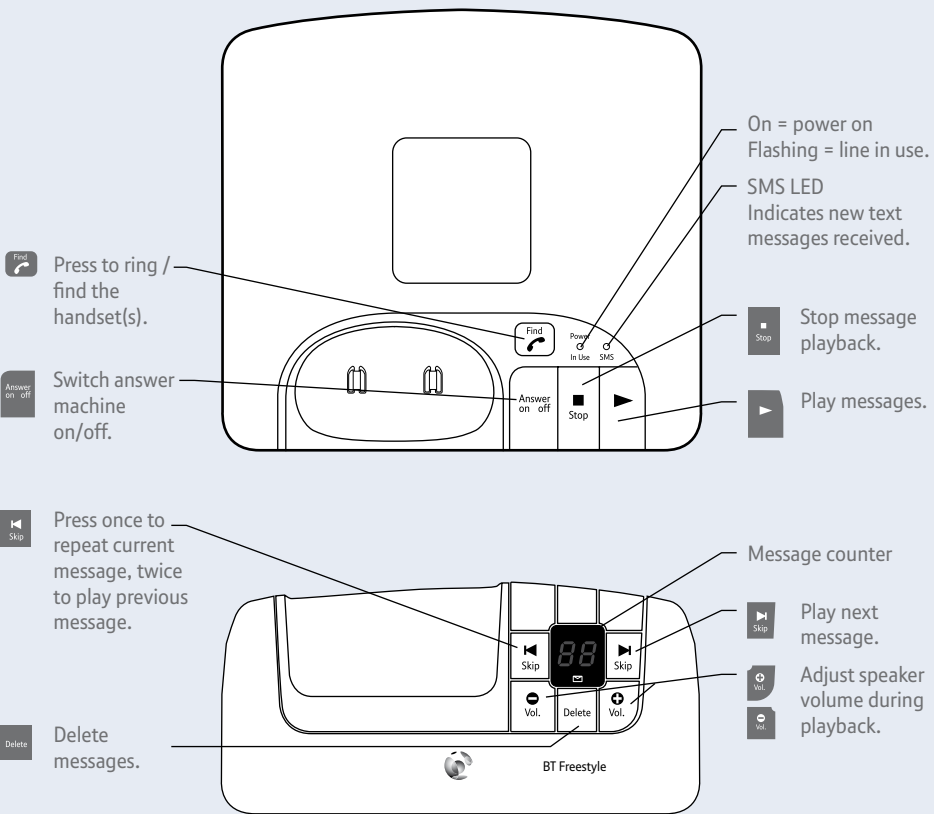
Please turn over

Your phone

Handset



Base



3 Go!

Set date and time

Press **Menu**, scroll **Redial** to **Settings** menu, press **OK**.

Press **Redial** until you scroll down to **Date/Time**, press **OK**.

Enter the date using the format (DD/MM/YY), press **OK**.

Enter the time using the format (HH/MM), press **OK**.

Making calls

Press **Call** then dial the phone number. Press **Call** to end the call.

Answering calls

If you have subscribed to Caller Display, the caller's details will be displayed before you answer (see the full user guide online at www.bt.com/producthelp for details).

Lift the handset from the base or charger to answer incoming calls. If the handset is **not** on the base or charger, press **Call**.

Handsfree

Press **Call** during a call to switch the call to loudspeaker.

Secrecy (Mute)

Press **Clr** during a call to activate secrecy mode. Press **Clr** again to resume your call.

Redial

Press **Redial**, scroll **Calls** or **Redial** through the list to the number you want.

Press **Call** to redial the number displayed.

Directory

Storing new directory entries (up to 100)

Press **Book** to open the directory. When storing the first entry, **Empty** is displayed. Otherwise, the first entry in the directory is displayed.

Press **Opt. New entry** is highlighted. Press **OK**.

Using the keypad, enter the telephone number (including area code) and press **OK**.

Using the letters on the keypad, enter the name. You may need to press the same button a few times until the letter you want is displayed. For example, press **2 ABC** once for **A**, or twice for **B**. If you make a mistake, press **Del**. Press *** r** to switch between upper case/lower case and digits, and **1** to enter a space.

Press **Save**. The entry is saved in the directory.

Dialling a directory entry

Press **Book**. The first entry is displayed.

Press **Calls** or **Redial** to scroll to the entry you want.

Press **Call** to dial.

Caller Display and the Calls list

You must subscribe to a Caller Display service for this feature to work. Your network provider may charge you for this service.

When you have new, unanswered calls in the calls list, the display will show **New calls**.

View and dial from the Calls list

Press **Calls** to open the calls list.

The most recent missed call is displayed. Press **Calls** or **Redial** to scroll through the list.

Press **Call** to dial the number displayed.

Or, press **Opt** to access further options e.g. view call details, save number or delete entries.

Answering machine

Your answering machine is on and ready to record messages. The controls are shown in the base diagram to the bottom left. You can also access the answer machine features through the handset menu.

For detailed instructions on all the answering machine features see the full user guide online at www.bt.com/producthelp

Recording your own outgoing message

Press **Menu**, scroll **Redial** to **Answer machine** menu, press **OK**.

Scroll **Calls** or **Redial** to **Answer settings**, press **OK**.

Scroll **Calls** or **Redial** to **Outgoing message**, press **OK**. **Record OGM** is highlighted, press **OK**.

Scroll **Calls** or **Redial** to highlight **Answer & record** or **Answer only**, press **OK**.

Speak your message after the announcement. To stop recording, press **Save**. Your message is played back to you.

Set answer delay

Press **Menu**, scroll **Redial** to **Answer machine** menu, press **OK**.

Scroll **Calls** or **Redial** to **Answer settings**, press **OK**. Scroll **Calls** or **Redial** to **Answer delay**, press **OK**.

Current setting is highlighted. Scroll **Calls** or **Redial** to select the number of rings or time saver, press **OK** to confirm.

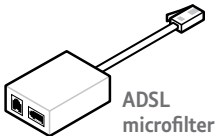
Text messaging

Before sending and receiving text messages you need to register to the text messaging service and subscribe to Caller Display. You will be automatically registered to the text message service when you send your first text. Please note that some other network provider lines may not be compatible with this text messaging service. See the full user guide online at www.bt.com/producthelp for details.

Help

Most problems can be fixed with a few simple checks.

Problem	Solution
No dial tone	Only use the cables and batteries supplied. Make sure both the mains power adaptor cable and telephone line cord are plugged into the correct sockets.
Poor speech quality	Make sure the product is not located too close to other electrical appliances. This can also help improve the handset range from the base.
Battery icon flashing/ handset dead	Make sure you charge the batteries for 16 hours before use to ensure maximum battery performance.
Using broadband on the same phone line?	Make sure you plug the phone into the wall socket via an ADSL microfilter (not supplied), otherwise you may have problems with this product and your broadband service.



Find out more

- New Frequently Asked Questions available at www.bt.com/producthelp
- If you need more detailed instructions, a full user guide is available to download from www.bt.com/producthelp
- If you cannot find the answer to your problem in the full online user guide, then please call the free Helpline on 0800 218 2182* or email bt.helpdesk@vtecheurope.com. Our dedicated advisors are more likely to be able to help you than the retailer where you made your purchase.