



Speed of connection

The maximum possible headline speed you can get with dual band dual channel is 300Mbps (single channel is 150Mbps). Your actual wireless speed will depend on the distance between your dongle and your Hub and your set-up. It's likely to be a third or less than the headline speed shown in Status. Remember that wireless speed is the speed of your connection over wireless from your Hub to the laptop and not your broadband speed, which could be higher. To get the best broadband speed, go to bt.com/speed.

Compatibility

Windows® Vista®, 7 and 8. This product is **not** compatible with Apple® Mac® or earlier versions of Windows®.

How to recycle your equipment

Your Hub is classed as electrical or electronic equipment, so DO NOT put it in your normal rubbish bin. It's all part of the Waste Electrical and Electronic Equipment (WEEE) Directive to recycle products in the best way – to be kinder to the planet, get rid of dangerous things more safely and bury less rubbish in the ground.

If you've bought something from us that comes under the WEEE Directive (it'll have the WEEE symbol on it, see right) and it's similar to the kit you don't need any more, you can send us your old kit and we'll get rid of it in an environmentally friendly way. Here's the address:



WEEE Take Back Scheme, BT Returns, BT DF, Darlington Road, Northallerton, DL6 7ZY

You'll need to pay the postage. Or, if you don't want to send it to us, ask your local council how to recycle it.



Offices worldwide

© British Telecommunications plc 2013
We're registered in England at 81 Newgate Street, London EC1A 7AJ
(company number 1800000).

Item code: 076090 | v2
Written and designed by The Art & Design Partnership and Muse Publishing

Made in China

All third party trademark rights are hereby acknowledged.



Call 0800 800 150 to get this leaflet in Braille, large print or audio CD

BT Dual band 2x2 Wireless USB Dongle for Windows® Quick Start



For support, go to bt.com/help/dongle



Job No. 1799
Client BT
Project Dualband Wi-fi dongle guide v2

Revision 3-DR
Modified 16/04/13
Created 09/04/13

Hello. Thanks for choosing BT.

Here's how to get going in three steps.

- 1 **Make sure you're online and able to surf the web**, then plug your dongle into a USB port. Give it a couple of minutes to set itself up.



If your dongle doesn't set itself up automatically, go to bt.com/help/dongle to download and install Windows version-specific full drivers, support and help.

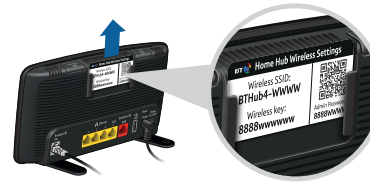
- 1 ? Using a company laptop? You might need administrator rights.

- 2 Open available wireless connections and find the dongle connection. It'll be called something like **WiFi2** or **Wireless Network Connection 2**.



Click the wireless network icon

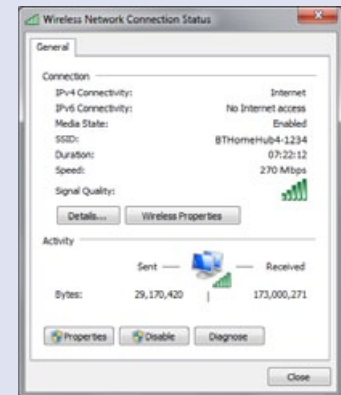
- 3 Choose your Hub from the list (eg. 'BTHub4-WWWW') and click **Connect**. You'll then need to enter the wireless details from your Hub's settings card.



- 1 ? **WPS automatic connect**
If you want to use WPS, you'll need to download the right Windows driver from bt.com/help/dongle.

- 1 ? **Dongle performance**
Your dongle uses two channels to give the best possible performance. To check its speed in Windows, right-click its connection and click **Status**. If your laptop is close to your Hub, this will typically be 130–270Mbps (a single channel connection can support a maximum 130Mbps). It'll be slower if you're farther away.

The figure shown here is the headline rate and the actual rate is typically a third of this or less depending on the environment.



For frequently asked questions or if you need some help, go to bt.com/help/dongle.