

Need any help?

Please visit [www.bt.com/help/mobilebroadband](http://www.bt.com/help/mobilebroadband)



Bringing it all together



BT Mobile Broadband Pre-Pay

# USB Modem User Guide

ZTE MF636

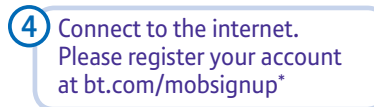
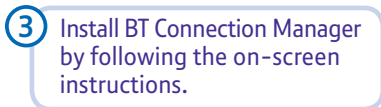
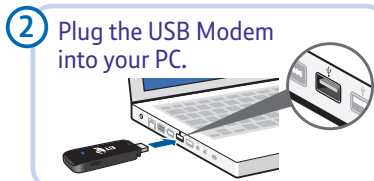
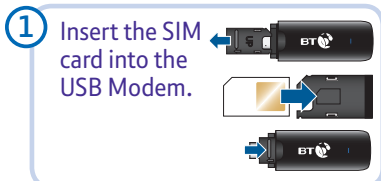
# Contents

<b>Quick Start Set-up / What's In Your Pack</b>	3
Minimum System Requirements	4
<b>Getting Started</b>	5
Step 1: Insert the SIM into your USB Modem	5
Step 2: Insert the USB Modem and install the BT Connection Manager software	5
Step 3: Connect to the internet	7
Step 4: Register online to manage your account	8
<b>Using BT Connection Manager And Your USB Modem To Get Online</b>	10
<b>BT Connection Manager – Mac</b>	11
<b>Your BT Mobile Broadband Pre-Pay Account</b>	12
How to Top up	12
Top up amounts	14
Check your spend and usage	14
Low credit	14
Using abroad	15
Top up from abroad	15
<b>Your USB Modem</b>	16
<b>FAQs</b>	17
<b>Acronyms And Abbreviations</b>	19
<b>Safety Information</b>	20

Need any help? Please visit: [www.bt.com/help/mobilebroadband](http://www.bt.com/help/mobilebroadband)

## Quick Start Set-up

For more detailed instructions, please see page 5.

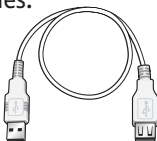


## What's In Your Pack

Your USB Modem box includes:



The USB Modem



USB cable



User Guide

The outer pack also includes:

- BT Welcome Letter
- SIM card in small white envelope

**Need to find your mobile number?**  
Please visit:  
[www.bt.com/help/findyournumber](http://www.bt.com/help/findyournumber)

\* To find out how to register, please see page 8.

## Minimum System Requirements

To use the MF636, your computer must meet the following requirements:

Connectivity	Spare USB port, compatible with USB 2.0 Full Speed
CPU	133 MHz or above, 500 MHz or above is recommended
Memory	256 MB RAM or more
Hard disk	50 MB or more free space
Operating system	Microsoft® Windows XP (32 bit), Vista, Windows 7 or Mac OS 10.4 and above
Display	Resolution of 800×600 or above, 1024×768 is recommended

## Getting Started

We know you're keen to get started with BT Mobile Broadband, so please follow these steps in the exact order shown below.

### Step 1: Insert the SIM into your USB Modem

To get started, you need to insert your SIM card into the USB Modem. You'll find your SIM card in a small white envelope inside the outer packaging.



Remove cap by gently pulling (do not force)



Remove SIM card holder from the neck of the MF636 and turn it over



Insert the SIM with the BT logo on the SIM card facing downward

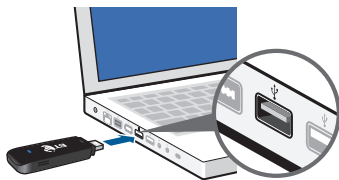


Turn the SIM card holder back over and click back into the MF636

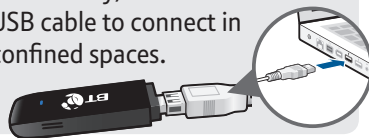
### Step 2: Insert the USB Modem and install the BT Connection Manager software

You'll need to have your laptop switched on before you plug the USB Modem in.

- i. Insert the USB Modem into a USB port on your laptop.



- ⓘ If necessary, use the enclosed USB cable to connect in confined spaces.



- ii. Follow the on-screen instructions.

It may take between 30 – 60 seconds for your computer to find the USB Modem and install the drivers. BT Connection Manager will then install. Depending on the speed of your computer, this may take between 2-5 minutes.

ⓘ **What's BT Connection Manager?**

BT Connection Manager allows you to connect your laptop to the Internet using Ethernet, Wi-Fi (including your BT Home Hub, BT Openzone and BT FON)\* and the BT Mobile Broadband network (HSPA, 3G, GPRS).

\*Ethernet and Wi-Fi connections not available on Mac.

### Step 3: Connect to the internet

#### Mac users go to page 8.

You have a choice of how to make this first connection to complete the setup.

- i. If you're in range of a Wi-Fi network, you can connect using Wi-Fi.
- ii. If you are out and about in an area with a mobile signal, you can connect to the BT Mobile network using your starter credit.

Either way it will only take a few minutes.

#### Connect using Wi-Fi

1. Make sure you're in range of your BT Home Hub (or similar wireless router); also ensure it's switched on and working. Make a note of the Wireless Network Name (SSID) and Wireless Key from the grey label on the back of the BT Home Hub or on your router.
2. Double click the **BT Connection Manager** icon on your desktop – when the circular dashboard screen appears, click on the **central button** to connect.



## Connect using the BT Mobile network

1. Make sure you're in an area which has a mobile signal.
2. Double click the **BT Connection Manager** icon. When the dashboard appears click; the **USB modem** icon and select **BT Mobile** (PC users) or **Connect** (Mac users).

**Please note:** it may take a few minutes for the USB Modem to initialise and the SIM to activate.

### Step 4: Register online to manage your account

- i. Register to manage your account online and to receive your Welcome Bundle.
- ii. To register, make sure you have your USB Modem plugged in and go to **bt.com/mobsignup**. If you have a bt.com account, please use these details to log in (you may use these to manage existing BT accounts online). If you don't have a bt.com account, please select 'sign up' and follow the on-screen instructions. If you have an account but have forgotten your username or password, follow the links on screen to have your details emailed to you.



**! IMPORTANT:**

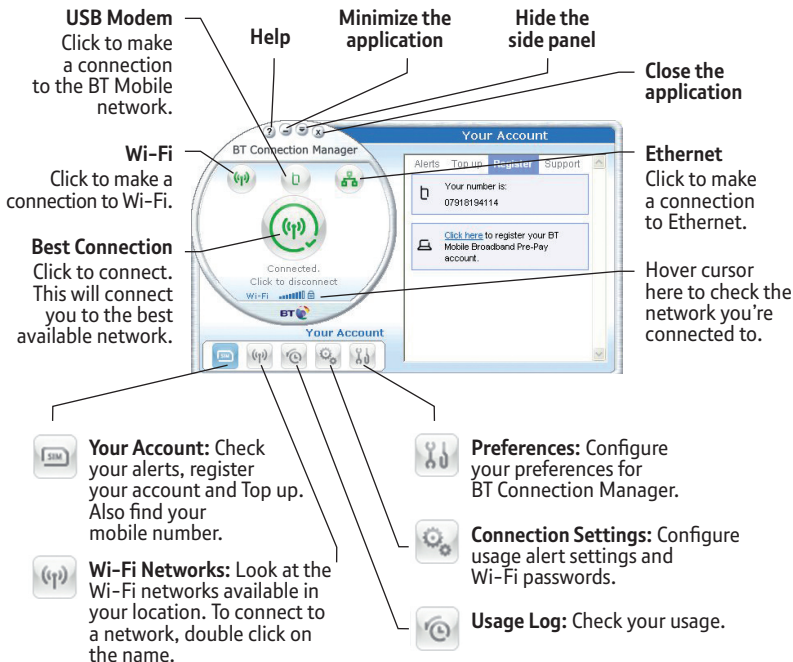
During the registration process, you'll be asked to enter your mobile number. This is the mobile number for the SIM card which you inserted into the USB Modem. This number is shown on a sticker on the back of the USB Modem pack and on your BT Welcome Letter. Please don't enter your normal mobile phone number here.



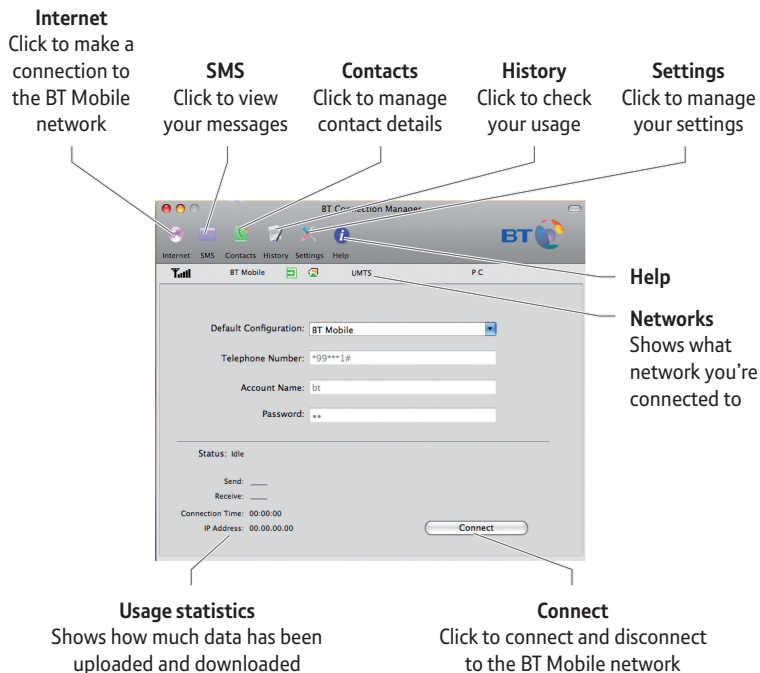
After entering your number, a confirmation number will be received in BT Connection Manager in; the Alerts tab (PC users) or SMS (Mac users). This is usually within 30–60 seconds. Enter this 4 digit code onto the appropriate web page during registration. Please note that this will expire within 15 minutes. If you enter this after the PIN has expired, you will need to start the process again.

**Congratulations!** You're now set up and ready to use BT Mobile Broadband Pre-Pay. The Welcome Bundle means you can get going straight away, using your laptop on the BT Mobile network.

# Using BT Connection Manager And Your USB Modem To Get Online



# BT Connection Manager – Mac



## Your BT Mobile Broadband Pre-Pay Account

You can manage your account online, which means you can:

- top up your account
- buy money saving bundles
- change your account PIN
- change your account alerts (to warn you when your balance is low)
- track your transaction history

### How to Top up

As you come to the end of your Welcome Bundle, you'll need to Top up.

You have the following options:

1. Top up your e-wallet online via [bt.com](http://bt.com) (using any computer):  
Go to **[www.bt.com/youraccount](http://www.bt.com/youraccount)**. Enter your [bt.com](http://bt.com) username and password. Choose Your BT Pre-Pay account then select from the options for bundles, amounts and payment methods. Please keep your credit or debit card ready as you'll be required to register your card before topping up.

2. Call our Automated Telephone Service on **Freephone 0800 169 0850** from a UK landline. Enter your USB Modem's mobile number and then follow the prompts. Anyone who knows your number can Top up your account.

You can find your Mobile Number on the back of the USB Modem pack or on BT Connection Manager under 'Your Account' (PC users only).

3. Buy an eVoucher using cash, debit card or credit card. They can be bought from many high street retailers displaying the top-up sign. You must ask for an eVoucher for BT Mobile.



Denominations of £5, £10, £15, £20 and £50 are available. On payment you will be given a receipt with your BT Mobile eVoucher number or PIN. Simply enter this number when you Top up online or by phone. The value of the eVoucher will be credited to your account.

### Top up amounts

If you use a credit or debit card, you can Top up in amounts from £10 to £95. If you purchase an eVoucher this can be in denominations as described above.

Please note that your account can hold a maximum balance of £100.

### Check your spend and usage

Go online at **[www.bt.com/youraccount](http://www.bt.com/youraccount)** and your balance will be displayed on the overview page once you log in. You can also check your transaction history. Alternatively, you can call the Automated Telephone Service on **Freephone 0800 169 0850**.

You can check your usage on BT Connection Manager under; Usage log (PC users) or History (Mac users).

### Low credit

When you start to run out of credit, an alert will appear in the BT Connection Manager. If you completely run out of credit whilst connected to the internet using the mobile network, you will be cut off until you next Top up.

Bundles are time-based and alerts will not inform you of this. If a non-recurring bundle expires, you will revert to the standard Pre-Pay rate provided you have credit.

## Using abroad

You can use BT Mobile Broadband Pre-Pay abroad. Please note that the cost of data is significantly higher than in the UK. For further information, visit **[www.bt.com/help/mobilebroadband](http://www.bt.com/help/mobilebroadband)**. If you are a member of BT FON, you can use your inclusive minutes at any FON hotspot around the world. For further details, visit **[www.bt.com/btfon](http://www.bt.com/btfon)**.

In addition, public Wi-Fi can be used outside the UK although these services may be subject to usage charges, for example in hotels. Check with the local operator for details. Wireless routers can also be used if you know the Wireless Network (SSID) and Network key.

## Top up from abroad

You can Top up online in the usual way when abroad. Alternatively, to Top up by phone when abroad, call the **Automated Telephone Service on +44 1277 201 748**.

## Your USB Modem




### USB Modem indicator lights explained

Indicator is... this means...

Green	the USB Modem is connected to a GPRS or GSM network
Blue	the USB Modem is connected to a 3G or HSPA (HSDPA/HSUPA) network
Red	the USB modem could not find a network
Off	the USB Modem is removed and not connected

### BT Connection Manager network icons explained (PC users only)

Indicator is... this means...

	Connection unavailable
	Connection initialising or finding connection
	Connection available



## FAQs

### 1. How do I start installation manually?

**Windows® XP** – click Start/Run/Browse then navigate to the BTQM folder and double click on BT logo file.

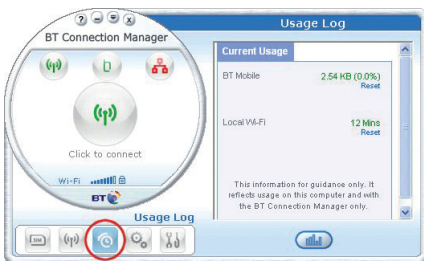
**Windows® Vista** – click Windows icon/Computer to view available drives – select BTQM logo and double click.

**Mac users** – please go to [www.bt.com/help/mobilebroadband](http://www.bt.com/help/mobilebroadband) for manual install instructions.

### 2. How can I check how much data I've used?

You can check your data usage in two places: on BT Connection Manager under Usage Log (PC users) or History (Mac users).

You can also access this information from [bt.com/youraccount](http://bt.com/youraccount).



The screenshot shows the 'BT Connection Manager' application window. The menu bar includes Internet, SMS, Contacts, History, Settings, and Help. The main window has tabs for BT Mobile, UMTS, and P.C. The 'Statistics for period' section shows a date range from 2009-10-22 to 2009-10-22. Below this is a table with the following data:

Connect Name	Start Time	Disconnect Time	Duration	Data Receive (Kb)	Data Transport (K)
BT Mobile	2009-10-2; 2009-10-21 17:30:00	05:37	892.42	176.02	
BT Mobile	2009-10-2; 2009-10-21 21:37:00	16:09	640.29	166.00	
BT Mobile	2009-10-2; 2009-10-22 09:28:00	24:01	17.15	7.69	
BT Mobile	2009-10-2; 2009-10-22 11:40:00	00:55	238.46	52.19	
BT Mobile	2009-10-2; 2009-10-22 11:40:00	00:14	0.53	1.97	
BT Mobile	2009-10-2; 2009-10-22 11:41:00	00:31	35.11	14.35	
BT Mobile	2009-10-2; 2009-10-22 11:42:00	00:48	35.34	14.89	
BT Mobile	2009-10-2; 2009-10-22 11:48:00	00:39	46.32	18.89	

At the bottom of the window are buttons for 'Show Statistics', 'Reset Record', and 'Delete'.

### 3. How do I find my USB Modem's mobile number?

Your USB Modem's mobile number is shown on a sticker on the back of the USB Modem box, on your BT Welcome Letter, and also on the Your Account menu of BT Connection Manager (PC only).

**Need any help?**

Please visit [www.bt.com/help/mobilebroadband](http://www.bt.com/help/mobilebroadband)

# Acronyms And Abbreviations

3G	The Third Generation mobile network
CPU	Central Processing Unit
GPRS	General Packet Radio Service
GSM	Global System for Mobile Communications
HSDPA	High Speed Downlink Packet Access
HSPA	High Speed Packet Access
HSUPA	High Speed Uplink Packet Access
ICNIRP	International Commission on Non-Ionizing Radiation Protection
OS	Operating System
PIN	Personal Identification Number
RAM	Random-Access Memory
RF	Radiofrequency (RF) Radiation
SAR	Specific Absorption Rate
SIM	Subscriber Identity Module
UMTS	Universal Mobile Telecommunications System
USB	Universal Serial Bus
USIM	UMTS Subscriber Identity Module
WCDMA	Wideband Code Division Multiple Access

# Safety Information

## Interference

- Some electronic devices are susceptible to electromagnetic interference transmitted by the USB Modem if inadequately shielded, such as electronic systems of vehicles.
- Do not place this device in the area over an air bag or in the air bag deployment area. Store the device safely before driving your vehicle.
- If necessary please consult the device or vehicle manufacturer before using the USB Modem.

## Interference with Medical Equipment

- Switch off your wireless device when requested to do so in hospitals, clinics or health care facilities. These requests are designed to prevent possible interference with sensitive medical equipment.

- Operation of your PC and USB Modem may interfere with personal medical devices such as hearing aids and pacemakers.
- Please always keep the USB Modem at least 20 centimeters away from such medical devices when they are in use.
- Power off the USB Modem if necessary.
- Consult a physician or the manufacturer of the medical device before using the USB Modem.

## Use in Explosive Environments

Be aware of usage limitations when using a USB Modem in places where there may be explosive gases or explosive products present. Such areas include but are not limited to the following:

- Petrol stations and fuel depots.

- Containers/Vehicles for storing or transporting fuels or chemical products.
- Areas where the air contains chemical substances and particles (including granules, dust, or metal powder).
- Areas indicated with “Explosives” signs, e.g. quarries where radio signals may interfere with blasting operations.
- Areas indicated with “Power off two way radios” or similar signs.
- Areas where you are instructed to stop the engine of a vehicle.
- If in doubt do not use the USB Modem.

### Safety of Children

- Store the USB Modem out of the reach of small children, it is not intended to be used as a toy and may cause injury if used as such.
- Do not allow children to use the USB Modem without guidance. Small and sharp components of the wireless device may cause danger to children or cause suffocation if children swallow the components.

### Care of your USB Modem

- Please use only original accessories or accessories that are authorized by the manufacturer. Using any unauthorized accessories may affect your USB Modem’s performance, and violate related national regulations regarding telecom terminals.
- Avoid using the USB Modem near metallic structures or facilities that can emit electromagnetic waves which may interfere with the reception of signals.
- The USB Modem is not waterproof, please keep it dry, free from moisture and store it in a cool place and away from sunlight.
- Do not use the USB Modem immediately after a sudden temperature change. This can cause the formation of condensation both inside and outside the USB Modem, therefore do not use it until it has time to acclimatize and dry.

- Treat the USB Modem carefully. Do not drop, bend, knock or harshly treat it to avoid permanent damage.
- Do not attempt to disassemble the USB Modem as this will invalidate your warranty. There are no user serviceable parts inside and only a qualified maintainer should undertake repair work.

### In Aircraft

- Please power off the USB Modem when onboard an aircraft. In order to protect the aircrafts communication and navigations systems from interference, it is forbidden to use the USB Modem in flight. Only use the USB Modem before take off with the crew's permission and according to local safety regulations.

### Environmental Protection

- Observe the local regulations regarding the disposal of your packaging materials, used USB Modem and accessories, and use recycling facilities wherever possible.

### WEEE Approval



- This USB Modem is in compliance with the essential requirements and other relevant provisions of the Waste Electrical and Electronic Equipment Directive 2002/96/EC (WEEE Directive).

### RoHS Approval

- This USB Modem is in compliance with the restriction of the use of certain hazardous substances in electrical and electronic equipment Directive 2002/95/EC (RoHS Directive).

### Observance of Laws and Regulations

- Observe all applicable laws and regulations when using your USB Modem. Respect the privacy and legal rights of others.

### Emergency Calls

- This USB Modem functions through receiving and transmitting radio signals, and the connection cannot be guaranteed in all conditions. In an emergency, you should not rely solely on the USB Modem for essential communications.

### Specific Absorption Rate (SAR)

- Your USB Modem is a radio transmitter and receiver. It is designed not to exceed the limits for exposure to radio waves recommended by international guidelines. These guidelines were developed by the independent scientific organization ICNIRP and include safety margins designed to assure the protection of all persons, regardless of age and health.
- The guidelines use a unit of measurement known as the Specific Absorption Rate, or SAR. The SAR limit for wireless devices is 2.0 W/kg and the highest SAR value for this device when tested complied with this limit.

### Body-worn Operation

- To ensure compliance with RF exposure guidelines the USB Modem must be used with a minimum of 1.5 cm separation from the body. Failure to observe these instructions could result in your RF exposure exceeding the relevant guideline limits.

### CE Approval (European Union)

- The USB Modem is approved to be used in the member states of the EU. The wireless device is in compliance with the essential requirements and other relevant provisions of the Radio and Telecommunications Terminal Equipment Directive 1999/5/EC (R&TTE Directive).



## Offices worldwide

The services described in this publication are subject to availability and may be modified from time to time. Services and equipment are supplied subject to British Telecommunications plc's respective standard conditions of contract. Nothing in this publication forms any part of a contract.

BT and the 'Connected World' logo and 'Bringing it all together' are trade marks of British Telecommunications plc.

© British Telecommunications plc 2009.  
Registered Office: 81 Newgate Street, London EC1A 7AJ.  
Registered in England No. 1800000.

No part of this document may be reproduced or transmitted in any form or by any means without prior written consent of British Telecommunications plc.

Designed by The Art & Design Partnership Ltd. V1.0  
PHME: 59033

Available in alternative formats including braille, large print, audio or text CD. Please call 0800 800 150.