

Need any help?

Please visit [www.bt.com/help/mobilebroadband](http://www.bt.com/help/mobilebroadband)



Bringing it all together



BT Mobile Broadband Pre-Pay

# USB Modem User Guide for Mac Huawei E180

# Contents

<b>Quick Start Set-up / What's In Your Pack</b>	3	Low credit	14
<b>Getting Started</b>	4	Using abroad	15
Step 1: Download BT Connection Manager for Mac	4	Top up from abroad	15
Step 2: Insert the SIM into your USB Modem	4	<b>Your USB Modem</b>	16
Step 3: Insert the USB Modem into your Mac	5	HSDPA, 3G and GPRS explained	16
Step 4: Connect to the internet	6	USB Modem indicator lights explained	17
Step 5: Register online to manage your account	7	<b>FAQs</b>	18
<b>Using BT Connection Manager for Mac and Your USB Modem To Get Online</b>	10	<b>Acronyms And Abbreviations</b>	19
<b>Your BT Mobile Broadband Pre-Pay Account</b>	11	<b>Safety Information</b>	20
How to Top up	11		
Top up amounts	12		
Bundles	13		
Check your spend and usage	14		

**Need any help?** Please visit:  
[www.bt.com/help/mobilebroadband](http://www.bt.com/help/mobilebroadband)

# Quick Start Set-up

For more detailed instructions, please see page 4.

- 1 Download BT Connection Manager for Mac from [www.bt.com/help/mobilebroadband/mac](http://www.bt.com/help/mobilebroadband/mac)  
**Please note:** you must be running Mac OS 10.4 or above to use BT Mobile Broadband.
- 2 Insert the SIM card into the USB Modem.
- 3 Plug the USB Modem into your Mac.
- 4 Connect to the internet. Please register your account at [bt.com/mobsignup](http://bt.com/mobsignup) \*

## What's In Your Pack

Your USB Modem box includes:



The USB Modem



USB cable



User Guide

The outer pack also includes:

- BT Welcome Letter
- SIM card in small white envelope

Need to find your mobile number?  
Please visit:  
[www.bt.com/help/findyournumber](http://www.bt.com/help/findyournumber)

\* To find out how to register, please see page 7.

# Getting Started

We know you're keen to get started with BT Mobile Broadband, so please follow these steps in the exact order shown below.

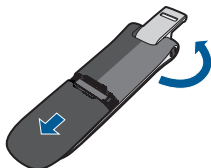
## Step 1: Download BT Connection Manager for Mac

Go to [www.bt.com/help/mobilebroadband/mac](http://www.bt.com/help/mobilebroadband/mac) and select BT Connection Manager for Mac to download it. Once the file has downloaded, click on the icon to start the installation, following the on screen instructions.

**Please note:** you must be running Mac OS 10.4 or above to use BT Mobile Broadband.

## Step 2: Insert the SIM into your USB Modem

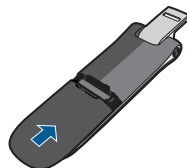
You'll find your SIM card in a small white envelope inside the outer packaging.



i. Turn the USB Modem face down and slide off the cover in the direction shown.



ii. With the notch in the SIM card at bottom right, and the BT logo upwards, slide the SIM card into the slot.

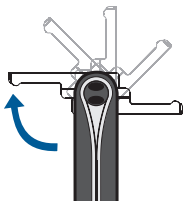


iii. Slide the cover back on.

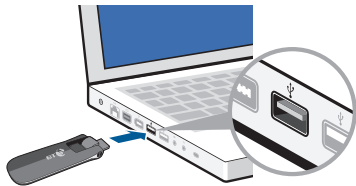
### Step 3: Insert the USB Modem into your Mac

You'll need to have your laptop switched on before you plug the USB Modem in.

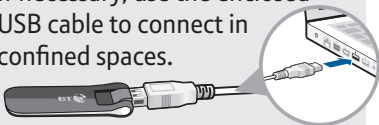
- i. Rotate the USB connector out of the top of the USB Modem.



- ii. Insert the USB Modem into a USB port on your laptop.



- ⓘ If necessary, use the enclosed USB cable to connect in confined spaces.





## What's BT Connection Manager for Mac?

BT Connection Manager for Mac allows you to connect your laptop to the Internet using the BT Mobile network (HSPA, 3G, GPRS).

### Step 4: Connect to the internet

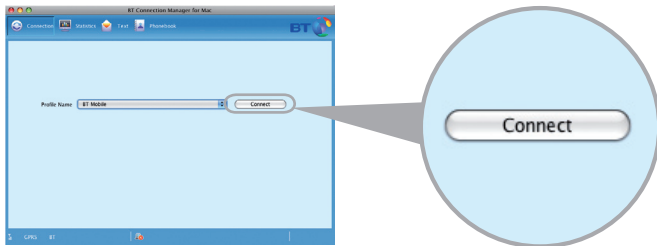
You have a choice of how to make this first connection to complete the setup.

- i. If you are out and about in an area with a mobile signal, you can connect to the BT Mobile network using your Welcome Credit.
- ii. If you're in range of a Wi-Fi network, you can connect using Wi-Fi.

Either way it will only take a few minutes.

### Connect using the BT Mobile network

1. Make sure you're in an area which has a mobile signal.
2. Double click the **BT Connection Manager for Mac** icon. After waiting for it to load, click **Connect** next to the Profile Name **BT Mobile**.



**Please note:** it may take a few minutes for the USB Modem to initialise and the SIM to activate.

### Connect using Wi-Fi

1. Make sure you're in range of your BT Home Hub (or similar wireless router); also ensure it's switched on and working. Make a note of the Wireless Network Name (SSID) and Wireless Key from the grey label on the back of the BT Home Hub or on your router.
2. Connect using your default Wi-Fi manager.

**Please note:** your USB Modem receives mobile signals only, it cannot receive Wi-Fi signals. To use Wi-Fi, you will need a Wi-Fi card, adaptor or Wi-Fi built into your Mac.

### Step 5: Register online to manage your account

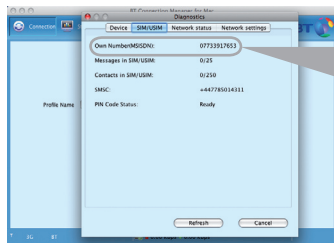
- i. Register to manage your account online and to receive your Welcome Bundle.

- ii. To register, make sure you have your USB Modem plugged in and go to **bt.com/mobsignup**. If you have a bt.com account, please use these details to log in (you may use these to manage existing BT accounts online). If you don't have a bt.com account, please select 'sign up' and follow the on-screen instructions. If you have an account but have forgotten your username or password, follow the links on screen to have your details emailed to you.

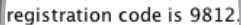
**! IMPORTANT:**

During the registration process, you'll be asked to enter your mobile number. This is the mobile number for the SIM card which you inserted into the USB Modem. This number is shown on a sticker on the back of the USB Modem pack and on your BT Welcome Letter. You can also find the number on BT Connection Manager for Mac. Go to **Tools>Diagnostics>SIM/USIM>MSISDN**.

Please don't enter your normal mobile phone number here.







0.00 kbps  0.00 kbps

## Getting Started

# Using BT Connection Manager for Mac and Your USB Modem To Get Online

## Connection

Click to make a connection to the BT Mobile network

## Statistics

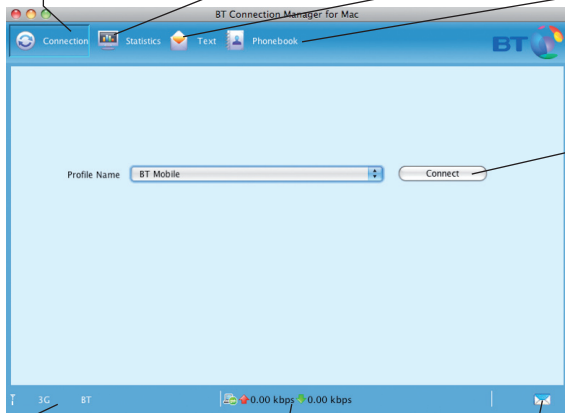
Click to check your usage

## Text

Click to view your messages

## Phonebook

Not functioning on this product



## Connect

Click to connect to and disconnect from the BT Mobile network

## Networks

Shows what network you're connected to

## Usage statistics

Shows how much data has been uploaded and downloaded

## Message alert

If you have a new message you will be notified here

# Your BT Mobile Broadband Pre-Pay Account

## Manage your account online

You can manage your account online, which means you can:

- top up your account
- buy money saving bundles
- change your account PIN
- change your account alerts (to warn you when your balance is low)
- track your transaction history

## How to Top up

As you come to the end of your Welcome Bundle, you'll need to Top up.

You have the following options:

1. Top up your e-wallet online via [bt.com](http://bt.com) (using any computer):  
Go to **[www.bt.com/youraccount](http://www.bt.com/youraccount)**. Enter your [bt.com](http://bt.com) username and password. Choose Your BT Pre-Pay account then select from the options for bundles, amounts and payment methods. Please keep your credit or debit card ready as you'll be required to register your card before topping up.

2. Call our Automated Telephone Service on **Freefone 0800 169 0850** from a UK landline. Enter your USB Modem's mobile number and then follow the prompts. Anyone who knows your number can Top up your account.

You can find your Mobile Number on a sticker on the back of the USB Modem pack and on your BT Welcome Letter.

3. Buy an eVoucher using cash, debit card or credit card. They can be bought from many high street retailers displaying the top-up sign. You must ask for an eVoucher for BT Mobile.



Denominations of £5, £10, £15, £20 and £50 are available. On payment you will be given a receipt with your BT Mobile eVoucher number or PIN. Simply enter this number when you Top up online or by phone. The value of the eVoucher will be credited to your account.

### Top up amounts

If you use a credit or debit card, you can Top up in amounts from £10 to £95. If you purchase an eVoucher this can be in denominations as described above.

Please note that your account can hold a maximum balance of £100.

## Bundles

Bundles are fixed amounts of data which you can buy on a one-off or on a recurring basis for a fixed price. They are paid from your account balance.

- **One off**

These are bundles that can be purchased as and when you need them. They are purchased from your account balance. The bundles last for one calendar month (for example, if you buy one on 4th June it will run until midnight on 3rd July) or until the data has been completely used up. After the bundle expires, you will revert to the Pre-Pay rate, provided you have credit.

- **Recurring Bundles**

These are bundles that renew automatically when your current bundle expires.

They are purchased from your account balance. If you don't have enough credit, BT will send an alert to remind you to Top up. Until you Top up, you will revert to the Pre-Pay rate, provided you have credit.

You can buy a one-off bundle if you use up your recurring bundle at any time.

### Check your spend and usage

Go online at **[www.bt.com/youraccount](http://www.bt.com/youraccount)** and your balance will be displayed on the overview page once you log into your BT Pre-Pay account. You can also check your transaction history. Alternatively, you can call the Automated Telephone Service on **Freefone 0800 169 0850**.

You can also check your usage on BT Connection Manager for Mac under **Statistics**.

### Low credit

When you start to run out of credit, an alert will appear in the BT Connection Manager for Mac. If you completely run out of credit whilst connected to the internet using the mobile network, you will be cut off until you next Top up.

Bundles are time-based and alerts will not inform you of this. If a non-recurring bundle expires, you will revert to the standard Pre-Pay rate provided you have credit.

## Using abroad

You can use BT Mobile Broadband Pre-Pay abroad. To do this, you will need to activate roaming. Please note that the cost of data is significantly higher than in the UK. For further information and for details of how to activate roaming, visit **[www.bt.com/help/mobilebroadband](http://www.bt.com/help/mobilebroadband)**. If you are a member of BT FON, you can use your inclusive minutes at any FON hotspot around the world using your default Wi-Fi manager.

For further details, visit **[www.bt.com/btfon](http://www.bt.com/btfon)**

In addition, public Wi-Fi can be used outside the UK although these services may be subject to usage charges, for example in hotels. Check with the local operator for details. Wireless routers can also be used if you know the Wireless Network (SSID) and Network key.

## Top up from abroad

You can Top up online in the usual way when abroad. Alternatively, to Top up by phone when abroad, call the **Automated Telephone Service on +44 1277 201 748**.

# Your USB Modem

## HSDPA, 3G and GPRS explained

The table below summarises the speed and availability of the connection methods available on the USB Modem using BT Connection Manager for Mac.

	HSDPA	3G	GPRS
Speed	up to 7.2 Mbps <sup>2</sup>	up to 1.8 Mbps	up to 64Kbps
Availability	Selected areas <sup>2</sup>	80% UK coverage	99.7% UK coverage

1. Other factors include site's distance from exchange and contention sharing (the number of active users nearby).
2. Up to 7.2Mbps download speeds are subject to contention sharing, user's computer equipment and HSDPA connection. Current HSDPA areas: London districts: E1, E1W, E14, EC1, EC2, EC3, EC4, NW1, SW1, W1, W2, W8, W9, W10, W11, W14, WC1, WC2. Airports: Heathrow, Gatwick, Luton, Stansted, London City, Southampton, Bristol, Birmingham, East Midlands, Liverpool, Manchester, Belfast City, Belfast Int., Cardiff, and Norwich.



## USB Modem indicator lights explained

Indicator is... this means...

---

**Solid Green** the USB Modem is connected to a GPRS (GSM/GPRS/EDGE) network

---

**Solid Blue** the USB Modem is connected to a UMTS (3G) network

---

**Solid Cyan** the USB Modem is connected to a HSPA (HSDPA/HSUPA) network

---

**Off** the USB Modem is removed and not connected

---

Intermittent blinking means the device is registered to, but not connected to, the relevant network. Connect using BT Connection Manager for Mac.

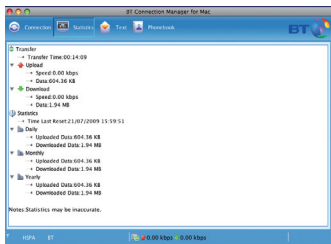
---

Rapid **Green** blinking means the USB Modem is on but not registered/connected (eg. no network coverage available).

---

## 1. How can I check how much data I've used?

You can check your data usage in two places: on BT Connection Manager for Mac under Statistics and also on [bt.com](http://bt.com). You can access this from [bt.com/youraccount](http://bt.com/youraccount).



## 2. How do I find my USB Modem's mobile number?

You can find your USB Modem's mobile number on a sticker on the back of the USB Modem pack and on your BT Welcome Letter. You can also find the number on BT Connection Manager for Mac. Go to **Tools>Diagnostics>SIM/USIM**. The MSISDN number is your mobile number. See page 8.

## 3. Will my USB Modem plug and play?

No. You must download and install BT Connection Manager for Mac from [www.bt.com/help/mobilebroadband/mac](http://www.bt.com/help/mobilebroadband/mac). See the Getting Started section of this guide for installation instructions.

# Acronyms And Abbreviations

3G	The Third Generation mobile network
CPU	Central Processing Unit
EDGE	Enhanced Data Rates for GSM Evolution
GPRS	General Packet Radio Service
GSM	Global System for Mobile Communications
HSPA	High Speed Packet Access
ICNIRP	International Commission on Non-Ionizing Radiation Protection
OS	Operating System
PIN	Personal Identification Number
RAM	Random-Access Memory
RF	Radiofrequency (RF) Radiation
SAR	Specific Absorption Rate
SIM	Subscriber Identity Module
UMTS	Universal Mobile Telecommunications System
USB	Universal Serial Bus
USIM	UMTS Subscriber Identity Module
WCDMA	Wideband Code Division Multiple Access

# Safety Information

## Interference

Do not use your USB Modem where prohibited or when it causes danger or interferes with electrical devices.

## Medical

- Follow any rules and regulations set forth by hospitals and health care facilities.
- Some wireless devices may affect the performance of hearing aids.
- If you are using an electronic medical device, consult a doctor or device manufacturer to confirm whether the radio waves affect its operation.

## Fire and Explosion

Do not use in areas storing inflammable or explosive materials. Such areas include but are not limited to the following:

- Petrol stations.
- Fuel depots
- Container/Vehicle for storing or transporting fuels or chemical products.

- Areas where the air contains chemical substances and particles (including granules, dust, or metal powder).
- Areas indicated with “Explosives” signs.
- Areas indicated with “Power off bi-direction wireless equipment” signs.
- Areas where you are instructed to stop the engine of a vehicle.

## Traffic Security

- Observe local laws and regulations while using the USB Modem. Do not use your USB Modem while driving.
- RF signals may affect electronic systems of motor vehicles. For more information, consult the vehicle manufacturer.
- In a motor vehicle, do not place the USB Modem over the air bag or in the air bag deployment area.
- Observe the rules and regulations of airline companies. When boarding, switch off your USB Modem – the radio signal of the USB Modem may interfere with the plane’s control signals.

## Safety of Children

Do not allow children to use the USB Modem without guidance. Small and sharp components of the wireless device may cause danger to children or cause suffocation if children swallow the components.

## Environment Protection

Observe the local regulations regarding the disposal of your packaging materials, used wireless device and accessories, and promote their recycling.

## WEEE Approval

This wireless device is in compliance with the essential requirements and other relevant provisions of the Waste Electrical and Electronic Equipment Directive 2002/96/EC (WEEE Directive).



## RoHS Approval

This wireless device is in compliance with the restriction of the use of certain hazardous substances in electrical and electronic equipment Directive 2002/95/EC (RoHS Directive).

## Laws and Regulations Observance

Observe laws and regulations when using your USB Modem. Respect the privacy and legal rights of the others.

## Care and Maintenance

It is normal that the USB Modem gets hot when you use it. Before you clean or maintain it disconnect the USB Modem from your PC.

- Use your USB Modem with care and in a clean environment. Keep away from fire or a lit cigarette.
- Protect the USB Modem and accessories from water and vapour and keep them dry.
- Do not drop, throw or bend your USB Modem.
- Clean the USB Modem with a piece of damp and soft antistatic cloth. Do not use any chemical agents (such as alcohol and benzene), chemical detergent, or powder to clean it.
- Do not leave the USB Modem and accessories in a place with extreme low or high temperatures.
- Only use accessories approved by the manufacturer.

- Do not dismantle the USB Modem or its accessories. Otherwise, the warranty will be invalidated.

## Emergency Calls

This wireless device functions through receiving and transmitting radio signals. Therefore, the connection cannot be guaranteed in all conditions. In an emergency, you should not rely solely on the wireless device for essential communications.

## Specific Absorption Rate (SAR)

Your wireless device is a radio transmitter and receiver. It is designed not to exceed the limits for exposure to radio waves recommended by international guidelines. These guidelines were developed by the independent scientific organization ICNIRP and include safety margins designed to assure the protection of all persons, regardless of age and health.

The guidelines use a unit of measurement known as the Specific Absorption Rate, or SAR. The SAR limit for wireless devices is 2.0 W/kg and the highest SAR value for this device when tested complied with this limit.

## Body Worn Operation

To ensure compliance with RF exposure guidelines the device must be used with a minimum of 1.5 cm separation from the body.

Failure to observe these instructions could result in your RF exposure exceeding the relevant guideline limits.

## Regulatory Information

The following approvals and notices apply in specific regions as noted.

### CE Approval (European Union)

The USB Modem is approved to be used in the member states of the EU. The wireless device is in compliance with the essential requirements and other relevant provisions of the Radio and Telecommunications Terminal Equipment Directive 1999/5/EC (R&TTE Directive).

### Federal Communications Commission Notice (United States)

Before a wireless device model is available for sale to the public, it must be tested and certified to the FCC that it does not exceed the limit established by the government-adopted requirement for safe exposure.

**The SAR limit** adopted by the USA and Canada is 1.6 watts/kilogram (W/kg) averaged over one gram of tissue. The highest SAR value reported to the FCC for this device type was compliant with this limit.

### FCC Statement

This device complies with Part 15 of the FCC Rules. Operation is subject to the following two conditions: (1) this device may not cause harmful interference, and (2) this device must accept any interference received, including interference that may cause undesired operation.

\* This device should be installed and operated with a minimum distance of 20 cm between the radiator and your body when using it via USB cable.



## Offices worldwide

The services described in this publication are subject to availability and may be modified from time to time. Services and equipment are supplied subject to British Telecommunications plc's respective standard conditions of contract. Nothing in this publication forms any part of a contract.

BT and the 'Connected World' logo and 'Bringing it all together' are trade marks of British Telecommunications plc.

© British Telecommunications plc 2009.  
Registered Office: 81 Newgate Street, London EC1A 7AJ.  
Registered in England No. 1800000.

No part of this document may be reproduced or transmitted in any form or by any means without prior written consent of British Telecommunications plc.

Designed by The Art & Design Partnership Ltd. Mac V1.0

Available in alternative formats including braille, large print, audio or text CD. Please call 0800 800 150.